

Secondary pawl ensures faster tightening.



360° x 360° hose
uniswivel.

CNZ SERIES HEX DRIVE

ABS CNZ hex drive torque wrench series are designed for confined spaces where other tools cannot operate or reach. Our sleek design offers the most perfect fit in the most confined spaces. Similar to the CNX series, the release lever for quick release of tool simplifies disengaging the torque wrench. These tools are ideal for applications where the bolt

protrusion is higher. The secondary pawl ensures faster tightening and prevents the ratchet from moving in the opposite direction.

There are various models available in this series with respect to the application ranging from 329 Nm - 41986 Nm.

INTERPRETATION AS PER DIAGRAM:

- Maximum torque 41986 Nm (30967 ft.lbs)
- Max. Working pressure 70MPa (10,000psi)
- A/F range from 36mm to 180mm
- High repeatability, with accuracy +/-3%
- Double acting, heavy duty type
- Compact, high strength unibody construction
- The tool is made out of Aero-grade high strength Aluminium titanium alloy.
- The ratchet link is interchangeable from different sizes
- Self-lubricating low Nickel Bronze material for drive bush to protect body from wear n tear.
- Auto engagement of rod in 1st stroke.
- Coupler for quick leak proof connection.
- 360° x 360° swivel for better degree of movement.
- Simple round shaped cylinder design.
- Hard Chrome Plated Piston Rod for advanced wear n tear resistance.
- High Quality Seals for high pressure.
- Torsion free reaction pad.
- Balanced load on side plate due to alignment pin.
- Cold worked cylinder bore for longer life & heavy working conditions.
- Secondary Pawl to ensure faster tightening

ADVANCED BOLTING SOLUTIONS PVT. LTD.

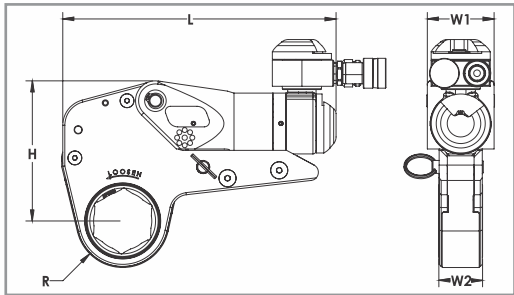
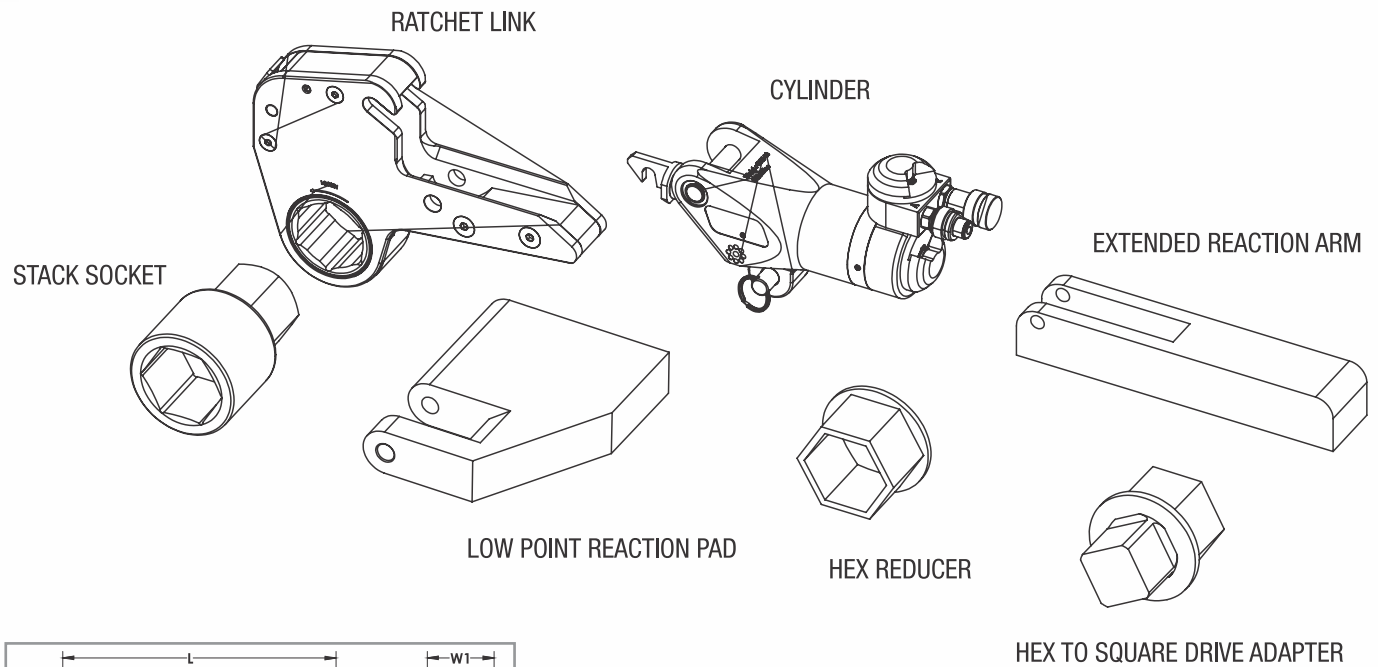
ABS House, W-116 (A), T.T.C. Industrial Area,
MIDC Khairane, Navi Mumbai - 400 710.

Phone: +91 82828 29795
Email: marketing@absgroup.in

www.absgroup.in



HYDRAULIC TORQUE WRENCH



MODEL	H (inch/ mm)	W1 (inch/ mm)	W2 (inch/ mm)	L (inch/ mm)	R (inch/ mm)	HEX (inch/mm)	WEIGHT (lbs/kg) (Without Link)	TORQUE (ft.lbs./Nm)	
								MIN.	MAX.
CNZ-01	3.36	1.50	1.10	6.28	0.80	3/4" - 1 5/8"	1.8	74	723
	85.5	38.3	28	159.7	20.38	19-41	0.8	100	980
CNZ-02	4.02	1.97	1.25	7.5	0.95 - 1.79	3/4" - 2 3/8"	1.98	243	1686
	102.1	50	31.8	190.4	24.1 - 45.5	19 - 60	0.9	329	2286
CNZ-05	5.37	2.59	1.67	10.16	1.30 - 2.67	1 5/16" - 3 3/4"	4.41	580	3853
	136.4	65.8	42.4	258	33.1 - 68	34 - 95	2	786	5224
CNZ-10	6.7	3.23	2.09	12.29	1.78 - 2.90	2" - 3 7/8"	7.50	1142	8146
	170.3	82.15	53	312.1	45 - 73.9	50 - 100	3.4	1549	11045
CNZ-18	8.04	3.87	2.49	14.66	2.31 - 3.48	2 3/4" - 4 5/8"	12.13	2009	13392
	204.1	98.4	63.2	372.4	58.9 - 88.4	70 - 120	5.5	2724	18157
CNZ-25	9.09	4.41	2.83	16.57	2.47 - 4.21	2 3/4" - 5 3/4"	14.85	2790	19100
	231	112	72	421	62.8 - 107	70 - 145	6.7	3780	25881
CNZ-42	10.71	5.18	3.33	19.46	3.03 - 4.72	3 1/2" - 6 1/2"	24.03	4577	30967
	272.1	131.5	84.6	494.25	77 - 120	90 - 165	10.9	6205	41986
CNZ-80	13.39	6.46	4.16	21.14	4.26 - 5.79	4-5/8" - 7-1/2"	48	8887	59120
	340.1	164.1	105.8	573	108 - 147	120 - 190	21.7	12020	80150

*Minimum and maximum torque output data may vary.

Note: Product image shown is for illustration purposes only; actual product may vary upon delivery.

ADVANCED BOLTING SOLUTIONS PVT. LTD.

ABS House, W-116 (A), T.T.C. Industrial Area,
MIDC Khairane, Navi Mumbai - 400 710.

Phone: +91 82828 29795
Email: marketing@absgroup.in

www.absgroup.in

